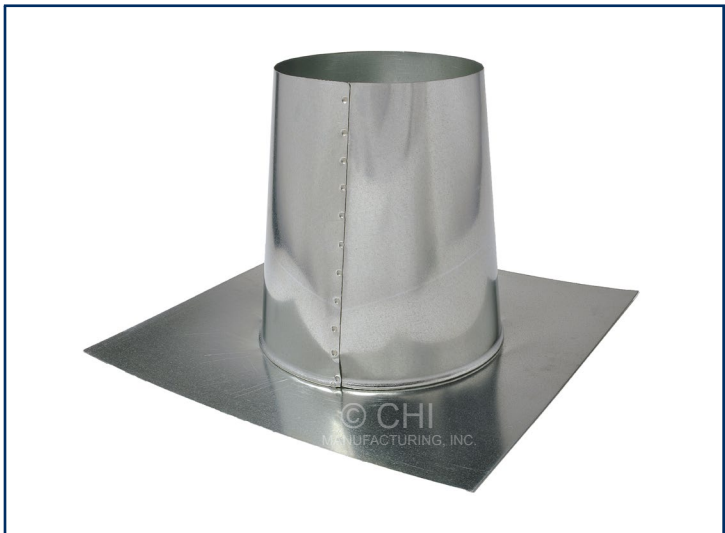




4460 S WINDERMERE ST
 ENGLEWOOD, CO 80110
 P: 303.761.3058
 F: 303.783.9014
 W: CHIMFG.COM
 E: CHIMFG@AOL.COM



STRAIGHT / FLAT JACK

ORDER SIZE	A	B
3/4"		26
3"		26
4"		26
5"		26
6"		26
7"		26
8"		26
10"		26
12"		26
14"		26

A=Weight
 B=Gauge

CONSTRUCTED:
 Hot Dipped Galvanized Steel PER ASTM A653 CS Type B

APPLICATIONS:
 Commercial designed to meet SMACNA Duct Construction Standards. Maximum W.G. is 2".

DESCRIPTION:
 All Straight / Flat Jacks are made with the finest G60 American Steel. Pop riveted seams. The collar is raw not crimped for your convenience.

UNION MADE IN THE UNITED STATES OF AMERICA
 PROUDLY USING 100% AMERICAN MADE METALS IN C.H.I. PRODUCTS